



<b>REPORT TO : STRATEGIC SCRUTINY MEETING</b>
<b>REPORT BY: CHIEF INSPECTOR IAN MILLS</b>
<b>TITLE: RACIALLY/RELIGIOUSLY MOTIVATED HATE CRIME UPDATE</b>

## 1. Summary

1.1 This report sets out the performance of the Constabulary to 31<sup>st</sup> of March 2016 and is in response to an action to the Chief Constable to provide a further update on racially/religiously aggravated crimes.

## 2. Decision Required

2.1 The Commissioner is requested to note the report

## 3. Information

3.1 The Commissioner will recall that at the Scrutiny meeting held in June 2015, a report was presented in relation to Racially/Religiously aggravated crime.

At the time of the meeting, Lancashire Constabulary was showing a reduction of 18% in the number of Racially/Religiously Aggravated crimes being recorded during the period May 14 to April 15 compared to the same period the previous year. This equated to a reduction of 95 incidents from 528 to 433.

This was in contrast to the 33 forces across the country experiencing increases. Lancashire was the only force in the North West Region and only one of three within our MSG experiencing a reduction (the others being Humberside and Kent). All of the other North West Forces were showing an even greater increase than was showing at the previous meeting whilst we are showing a greater reduction.

Whilst welcoming the figures in Lancashire the Commissioner was surprised to note that in view of Lancashire's diverse communities the numbers of reported incidents were similar to that of Cheshire.

At the time, Cheshire Constabulary was showing an increase of 6.3% during the period May 14 to April 15 compared to the same period the previous year. This equated to an increase of 32 incidents of Racially/Religiously aggravated crime from 512 to 544.

In order to provide re-assurance the Chief Constable agreed to assess the recorded levels of racially and religiously aggravated incidents and offences and present a report to a future meeting.

The recording of Racially/Religiously Aggravated crimes is undertaken in accordance with Home Office Classifications and covers:-

- Racially/Religiously Aggravated Harassment
- Racially/Religiously Aggravated Assault With Injury
- Racially/Religiously Aggravated Public Fear, Alarm or Distress
- Racially/Religiously Aggravated Criminal Damage
- Racially/Religiously Aggravated Assault Without Injury

It is recognised nationally that there is significant under reporting of hate crime. Whilst there is no definitive evidence as to the under reporting the Crime Survey of England and Wales suggests estimates this to be in the region of 80% could go unreported.

For recording purposes, Lancashire Constabulary use specific markers for each of the above strands held within the relevant Crime Reports. We also record Hate Incidents separately using the specific Home Office Classifications for each strand.

Over previous years the number of hate crime recorded by the Constabulary has been impacted by spikes caused by local, national and international events as per 2013.

## **Review**

A dip sample has been taken of hate incidents over the last 12 months and areas of inconsistencies have been identified that may account for the reductions. These included the call handling and tagging process, local key word scanning and crime recording. These are areas that are currently being rectified through a new approach to 'hate crime' by streamlining the number of tags a call handler can allocate, the supervision of the logs by the Demand Management Unit, a consistent scanning process in divisions and a central quality assurance through the Diversity and Equality Group.

Further, changes in the BCU structures, communications rooms and the merging of local diversity departments no doubt has and is continuing to impact upon engagement / awareness opportunities alongside the changing demand of community cohesion teams.

Indeed, it has been identified that the Constabulary has not conducted any internal or external hate crime awareness since 2012/13 which was in the main disability themed. Preliminary discussions have been held with the Office of the Police and Crime Commissioner and this will be addressed in 2017.

In July 2015 the Hate Crime portfolio moved under the Corporate Development portfolio in parallel with the on-going Valuing Difference and Inclusion work. All the relevant national reports and recommendations over the past 4 years have been brought together and have revealed the necessity to develop in the following areas;

- Increase understanding both internally and externally
- Increase confidence both internally and externally
- Increase confidence to report incidents and crimes
- Increase confidence in the criminal justice system

The national recommendations have been supplemented by a local view which will be gathered at a multi-agency awareness event on the 12<sup>th</sup> of October (Hate Crime Awareness Week) and supplemented by evidence based work provided through UCLAN.

Through the Lancashire Strategic Hate Crime and Cohesion Group (SHCG) the Constabulary are at the heart of designing the new consistent approach of the group to, increase awareness, understanding, confidence and reporting of Hate Crime with the above local, national and evidenced based approach tabled and agreed.

Since July through the Corporate Development Department the following has been progressed;

### **Governance**

- Through the DEDG confirmed new divisional hate crime governance processes
- Developed a cross strand Lancashire Hate Crime plan
- Confirmed partnership approach to key areas of hate crime through the SHCCG

### **Partnership working**

- Developing a Hate Crime Service Level Agreement with CPS
- Ensured a joint understanding CPS, OPCC, Probation and key partners
- Scoped joint training opportunities with CPS
- Attended CPS, partner and Police Disability Hate Crime Scrutiny panels with best pro-active and learning provided across the County
- Nationally through partners – Stephen Brookes – Lancashire has a voice with the current Director General and Minister for Disability who actively champion and want to adopt our approach to third party reporting
- Lancashire's approach to third party reporting centres asked to be included and presented at a National CPS seminar
- UCLAN hate crime seminar

### **Raising Awareness / Confidence – Internally**

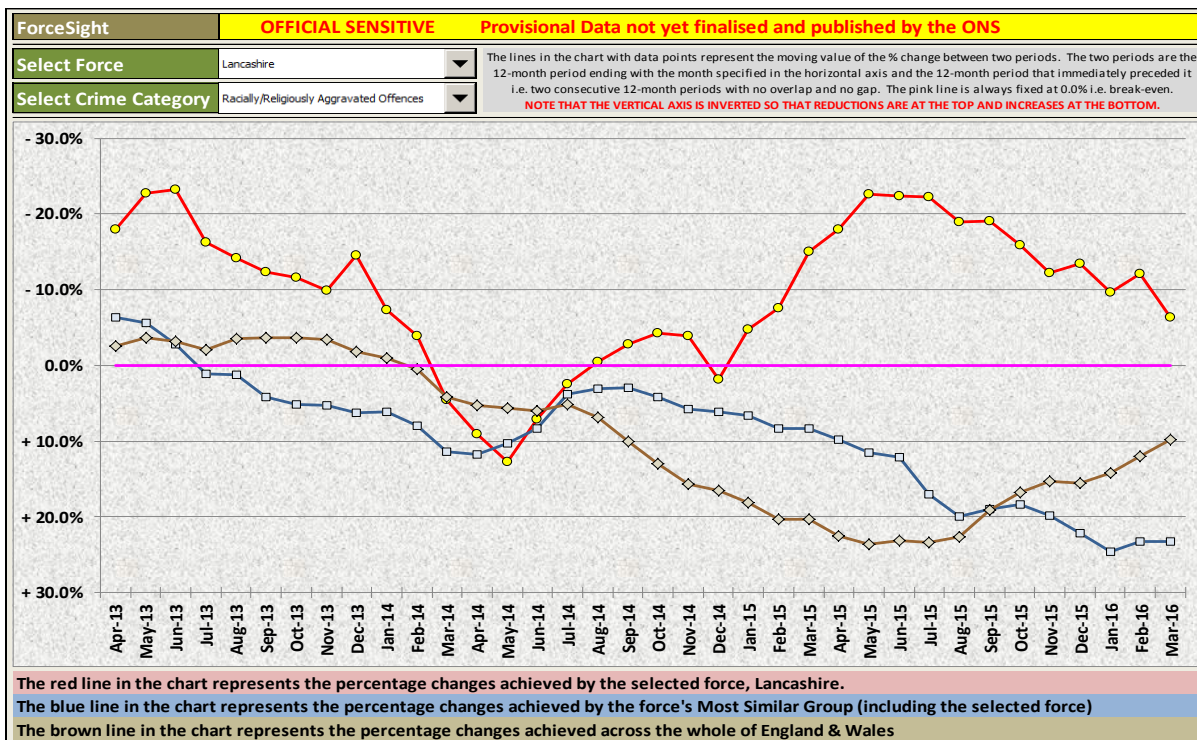
- Identified training gaps for the front line and Custody Reception Teams
- Commenced IIU hate crime training
- Internal quality assurance of hate crime logs and gained understanding of our failings
- Identified a consistent approach for division to follow to ensure service is equitable across the county
- Identified key partners who are in a position to aid in making training 'real'
- Developed 'live' CPS case QA procedures through the HQ Diversity team.
- End to end process review to include call taking, CJ process, Victim and Perpetrator
- Joint police and CPS file preparation training

## Raising Awareness / Confidence Externally

- Quality assuring the impact of 3<sup>rd</sup> party reporting centres across Lancashire and any subsequent expansion
- Reviewed Lancashire's third party reporting centres in order to ensure consistency
- Developed a governance frame work for third party reporting centres
- Established with the Lancashire Council of Mosques becoming a third party reporting centre
- Hate Crime Restorative Justice Volunteers to support third party reporting centres
- Established a Transgender Critical support Group for the Constabulary
- Joint training to taxi driver forums in the East of the county on the reporting of hate incidents and crimes.

Both external and internal changes to service delivery can be attributed to the reduction that have been seen over 2014/15.

The Commissioner will recall that in June 2015 the estimated year end reduction was 18%. Since the above review a number of actions have been implemented which has led to an increase in the recording of Racially/Religiously motivated hate crime to Lancashire Police. The actual year end reduction as at March 2016 was 6.3%. The below chart shows the direction of travel for Lancashire against our most similar group and nationally;



Whilst it is not possible to calculate precisely what the number of reported incidents would have been in June 2015, if the inconsistencies identified above, had been rectified at the time, predictions for 2016/17 show that based on the last 12 months figures Lancashire should continue to show an increase and record an increase for the year. Based on these predictions Lancashire should demonstrate a level of recording that is somewhere between that of Cheshire Constabulary and GMP which is in line with the Commissioners comments at the June 2015 Scrutiny meeting.

## **Implications**

4.1 There are no implications

### **4. Links to Police & Crime Plan**

5.1 This report links directly to protecting vulnerable people and is specific component of the Commissioners Police and Crime Plan priorities. .

### **5. Reasons why Restricted**

N/A

### **6. Background Documents**

None

### **7. Contact for Further Information**

Chief Inspector, Corporate Development Tel 413927